



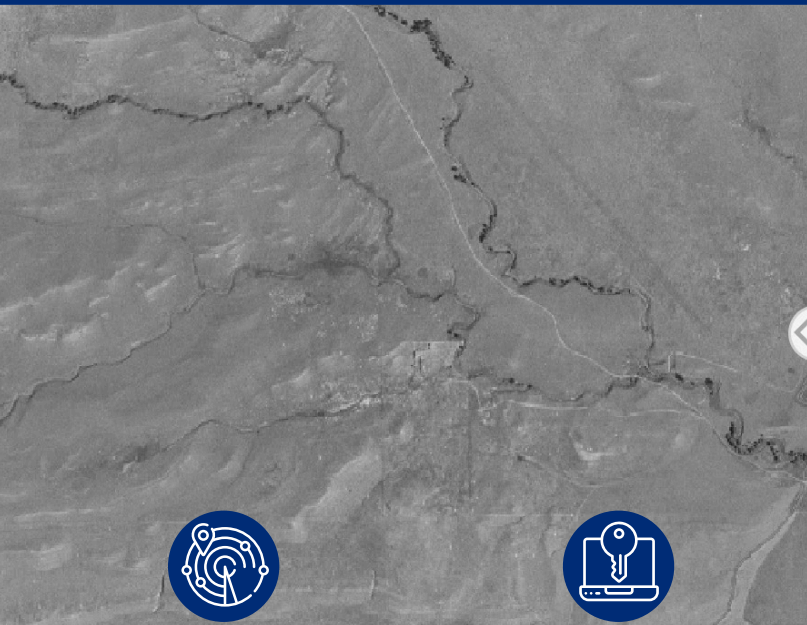
Seventy years of landscape change at your fingertips

We are excited to share a new resource with the GIS community and natural resource managers: historical aerial imagery spanning 17 western states, all available completely free at LandscapeExplorer.org

Our Landscape Explorer map application provides a powerful tool to visualize landscape and ecosystem change since the 1950s.

View historical imagery side-by-side with modern Google imagery

at our website, or bring the imagery into your own GIS and remote sensing projects to inform conservation across the western U.S.



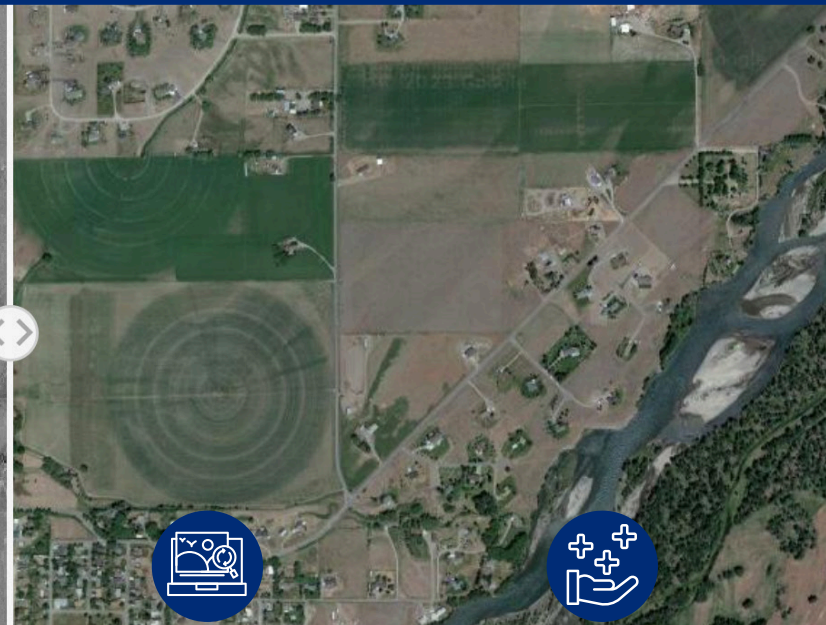
COVERAGE

Our GIS-ready imagery encompasses states west of the Mississippi River, including: AZ, CA, CO, ID, KS, MT, ND, NE, NM, NV, OK, OR, SD, TX, UT, WA and WY.



ACCESS

Use our imagery through our intuitive website, download imagery as GIS-ready tiles, stream imagery via our WTMS service, or access via Google Earth Engine.



IMAGERY SOURCE

Most imagery was collected by the U.S. Army in the 1950s. In our web-map simply click on a location to access in-depth metadata, including the image acquisition date.



BENEFITS

Easy and free for non-commercial use. This product provides a baseline that's 40 years earlier than other freely available high-resolution aerial images.

This project was conceived to support Working Lands for Wildlife conservation initiatives for grassland and shrubland ecosystems. Learn more about our frameworks and biome-level approach to conserving these imperiled systems at WLFW.org.



USE THE DATA

LANDSCAPEEXPLORER.org/data

